

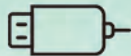
Starry

Slit Lamp Imaging System



Leading with USB 3.0 Imaging Excellence:

Unlock remarkable image quality with our advanced USB 3.0 camera, delivering exceptional results.



Effortless Data Transfer:

Benefit from lightning-fast data transfer and simple connectivity. A single cable links to your computer with ease.



Seamless Wireless Capture:

Powered by a 2.4GHz wireless solution, our camera ensures rapid response times and stable performance.



Intelligent Exposure: Our advanced solution guarantees precise and intelligent exposure for top-notch results.



Efficiency in Design:

With an intuitive interface and compact build, our camera offers efficient operation and easy installation.



Comprehensive Information Management:

Empower your practice with integrated software featuring a database for streamlined patient data management.



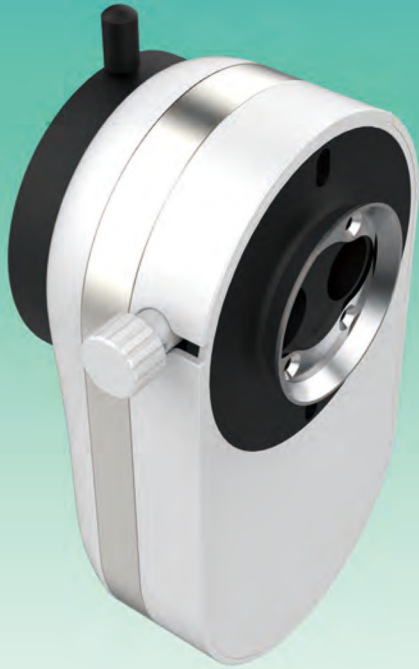
Enhanced Compatibility:

Seamlessly integrating with various slit lamp models, our camera offers versatility and convenience.



Starry

Slit Lamp Imaging System



- **Image Sensor:** 1/1.8" progressive high-speed CMOS
- **Image Size:** Up to 6 meg (3088x2064) pixels
- **Cell Size:** 2.4 μ m x 2.4 μ m
- **Resolution Dept.:** 8bit RGB Bayer Pattern
- **Transmit Method:** USB 3.0
- **Transmit Speed:** Up to 5Gbps
- **Frame Rate:** Up to 30Fps
- **Photograph:** External Trigger or Software Trigger
(Wireless: 2.4Ghz)
- **Dimension:** L155mm x W85mm x H46mm
- **Power Consumption:** Less than 3W



**NETZ**®